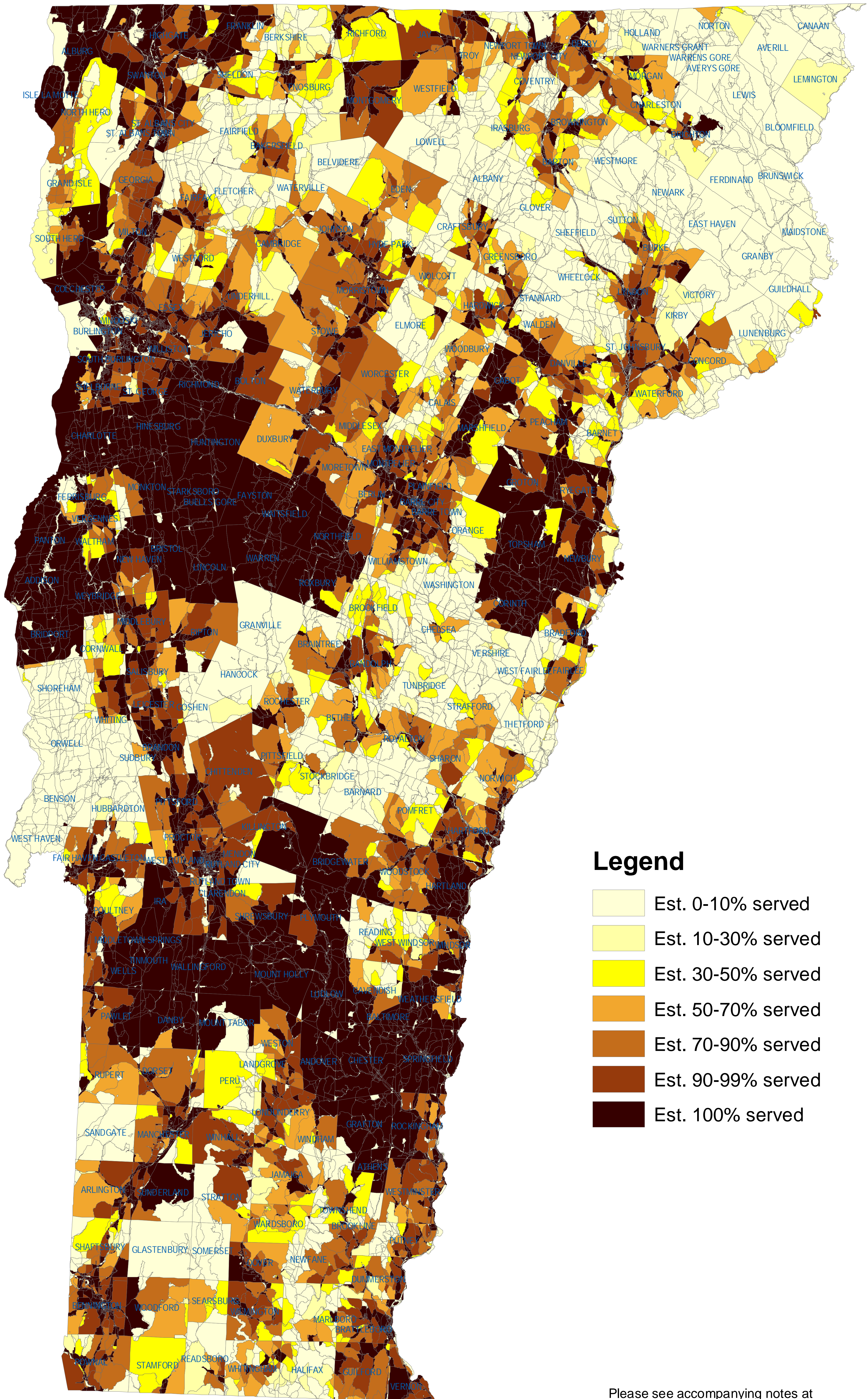


Estimated Household Broadband Availability by Census Block for Round 2 Broadband Stimulus



Legend

- Est. 0-10% served
- Est. 10-30% served
- Est. 30-50% served
- Est. 50-70% served
- Est. 70-90% served
- Est. 90-99% served
- Est. 100% served

Please see accompanying notes at recovery.vermont.gov/broadband. Households estimated using nonseasonal residential E911 points. Broadband availability estimated for services offered at or exceeding 768 kbps/200 kbps threshold.